

Container Loading Guide with Sealock

Step 1 - Inspection



Conduct container and truck inspection for defects, alterations, and hidden compartments / contraband. **Reject container if it does not pass the criteria or has any non-acceptable defects.**

i Reference 7-Pt. Ocean Container Security Inspection Guide for complete procedures.

Step 2 – Cleanliness & Integrity



Ensure container is clean, empty and free of illegal alterations, modifications or trap doors. Check container for light leaks.

i To properly check for light penetration from defects, view from inside with doors completely closed.

Step 3 – Supervised Loading



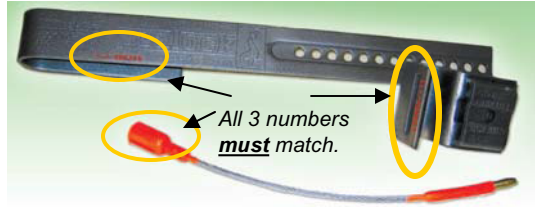
Validate that the loading is supervised and done by trusted, known agents.

i Be sure to double check load contents before moving to Step 4. Once doors are closed and the Sealock device is applied, it can only be removed with a special cutting tool.



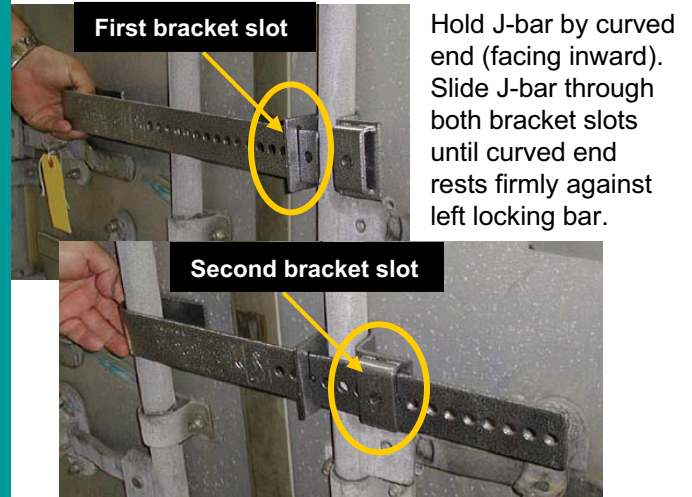
Step 4 – Install Sealock Device

Install Sealock J-bar and cable seal. Ensure cable seal serial number matches locking bar and bracket serial numbers.



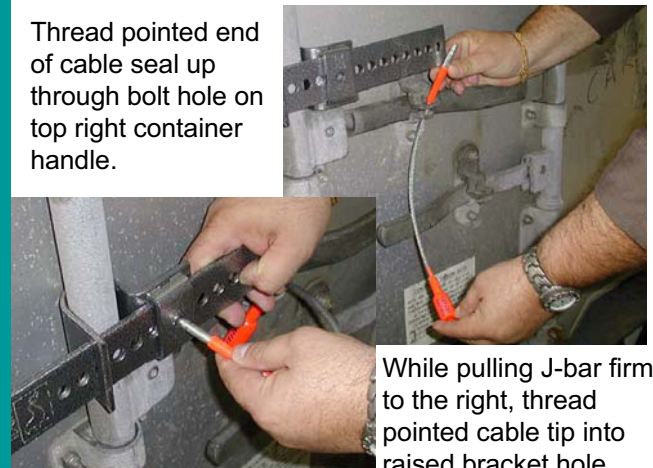
Installation Directions

Slide bracket behind right locking bar on container.



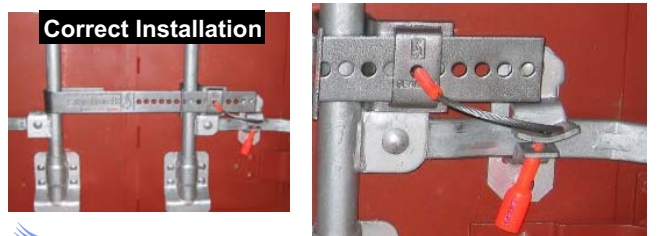
Hold J-bar by curved end (facing inward). Slide J-bar through both bracket slots until curved end rests firmly against left locking bar.

Thread pointed end of cable seal up through bolt hole on top right container handle.



While pulling J-bar firmly to the right, thread pointed cable tip into raised bracket hole.

Push pointed tip all the way through until secured. To ensure proper installation, tug firmly on cable seal and make sure J-bar is not moveable.



i Only trusted and specially trained / designated personnel are allowed to access, distribute and affix container seals. **Never** release seals to unauthorized personnel, including truck drivers. All broken seals should be collected and properly destroyed so they cannot be modified or reused.

Step 5 – Load Confirmation

Document load supervisor and Sealock serial number in shipping records.