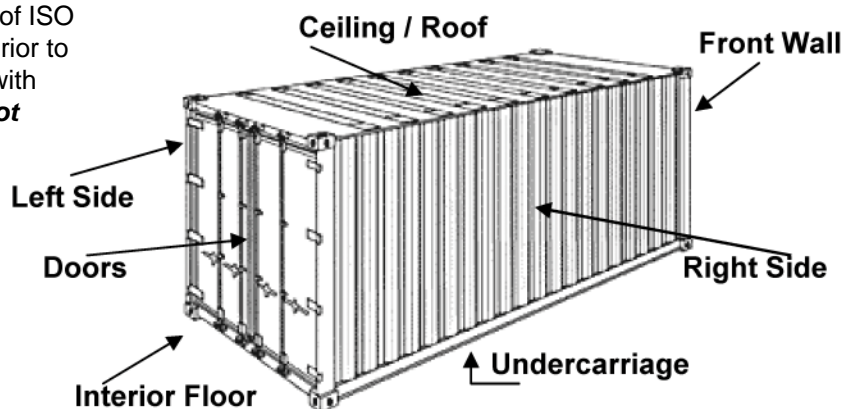


USDHS / USCBP / C-TPAT / BASC "BEST PRACTICE" 7-Point Ocean Container Security Inspection Guide

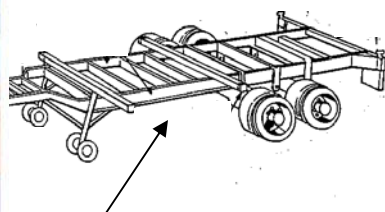
Conduct 7-point interior and exterior inspection of ISO ocean container to verify the physical integrity prior to loading. Document container results and keep with shipping records. **Reject containers that do not pass the 7-Point Inspection criteria.**

i Reference back for additional inspection criteria information.



Outside and Undercarriage

Before allowing the container to enter the facility, inspect undercarriage and outside of container. Use a mirror to access hard-to-see areas.



i Undercarriage support beams should be visible; solid plates should not cover the beams.

Left and Right Sides

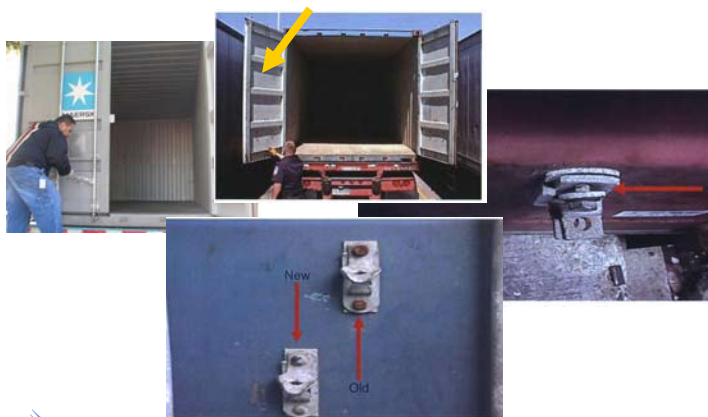
Inspect internal and external surfaces, including structural beams. Use a tool to tap side walls – listen and feel for hollow, metal sound. All walls, ceiling, and doors should be metal.



i Any repairs on the inside must be also visible on the outside. Blocks and vents (9 holes) inside container must be visible and appropriately spaced (see above picture).

Doors – Outside and Inside

Ensure locking mechanisms are secure and in good working order. There should be ribs on the interior sides of each door; solid plates should not cover standard interior door cavities.



i Look for different color bonding material, loose bolts, new and worn metals on same device. Doors should seal completely when closed.

Front Wall

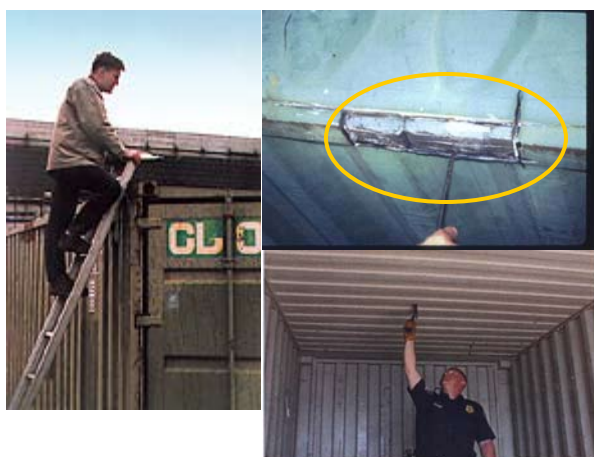
Inspect front wall, making sure vents and blocks are visible and appropriately spaced. Measure interior and exterior with a tape measure, range finder or string. Container should be exact to specifications.



i Look for different wall colors and blocks that are too close to the vents. Use a tool to tap front wall – you should hear a hollow, metal sound.

Ceiling & Roof

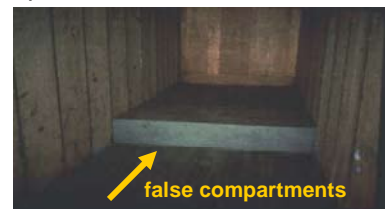
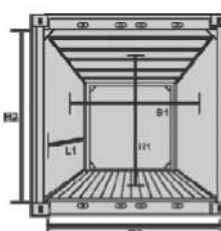
Inspect external roof and internal ceiling, including structural beams. Use tool to tap – you should hear a metal, hollow sound. If unable to see roof of container, use ladder or a mirror attached to a pole.



i Any weld repairs on the inside must be also be visible on the outside. Watch for unusual welding or repair on support beams. False compartments are common in ceilings, beams, floors, doors, and the front wall.

Interior Floor

Inspect floor for unusual repairs. Floor should be flat and one height. Measure floor to ceiling with a tape measure, range finder or piece of wood. Container should be exact to specifications.



i You should not need to step up from edge of container to get inside; there should be no steps or raised platforms inside container.



